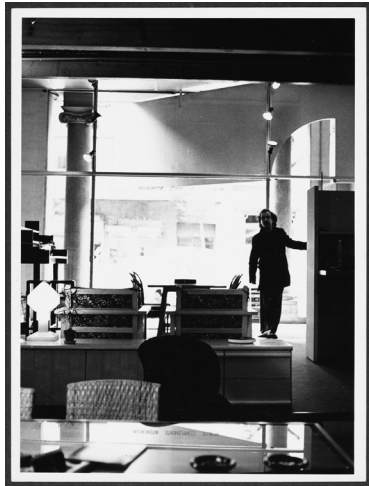


Furniture and objects for home

Mobles114

Bringing comfort
to homes since 1973



The most sustainable design is one that lasts forever

Mobles 114 is a Barcelona-based company founded in 1973. It offers a collection of furniture and objects designed with people in mind. The furniture is intended for living spaces, regardless of trends, consciously designed and made with quality and durable materials, whether for domestic, work, or collective environments.

For over 50 years, Mobles 114 has been offering furniture and objects, some iconic, to accompany people throughout their lives with the intention that these pieces become part of their space silently and pass from generation to generation.



Our history



Mobles 114 was founded in Barcelona in 1973 by designers JM Massana, JM Tremoleda, and Mariano Ferrer. Its first headquarters were located at Carrer d'Enric Granados 114, and this is the origin of the name: a location in the heart of a city that was beginning to experience social and cultural changes that had started in Europe in 1968. The company was initially established as an interior design studio and store, offering a selection of products manufactured by local companies and other contemporary designs imported from European countries, while also initiating their own designs and productions.

Massana and Tremoleda not only design but also curate a collection of furniture and objects where tradition and modernity converge. This collection is influenced by the proposals promoted by the architects of the GATCPAC

during the 1930s, who participated in European architectural rationalism, with figures such as Le Corbusier, Ludwig Mies van der Rohe, or Walter Gropius, among others. However, these influences did not make them forget their Mediterranean roots. Tradition is represented in the recovery and reissue of classics from Catalan design, while modernity is evident in their own proposals and in the choice of designers or authors who will sign for the Mobles 114 catalog.

Over these 50 years, furniture and objects designed by Álvaro Siza, André Ricard, Antoni Arola, Carlos Riart, Enzo Mari, Eugeni Quitllet, Gabriel Mora, Gabriel Ordeig, Germán Rodríguez Arias, Isamu Noguchi, Isidre Ferrer, Mariano Ferrer, Javier Mariscal, Joan Gaspar, Jorge

Pensi, José Antonio Coderch, Josep Maria Jujol, Josep Torres Clavé, Lagranja, Lluís Pau, Lluís Porqueras, Martín Azúa, Massana-Tremoleda, Josep Mora, Miguel Milá, Montse Padrós, Oscar Tusquets, Pete Sans, Rafael Marquina, and Santiago Roqueta have participated in our catalog.

Mobles 114 has received several awards, but we are convinced that the best recognition is not awarded by a jury, but by the people who live with our furniture. For decades, this recognition has made it possible for the timelessness of furniture and objects to endure through generations.

This spirit of permanence, of enduring forever, of accompaniment, is what has guided us as a company to act with coherence and understatement, maintaining a profound respect for tradition and a sincere admiration for modernity.



“I am exalted by the new, enamored of the old.”
— J.V. Foix. Sol, i de dol (1947).

Editions, designers and authors

Mobles 114 undertakes a commitment to creating furniture designed by authors who prioritize simplicity and avoid the unnecessary to obtain pieces that endure over time.

Over these five decades, we have developed a catalog of products in collaboration with designers and authors from various fields who contribute their knowledge to find the best solutions. This teamwork strengthens both the product and the designer and the company.

Such editing process, initiated by the founders JM Massana and JM Tremoleda, turns into a catalog with its own personality which remains relevant and always takes care of the forms, materials and uses to ensure they are useful, comfortable, discreet and durable.



Meet the designers



Antoni Arola
Tarragona, 1960

He combines design, artistic experimentation and research on light. He has developed his work in the fields of lighting, furniture, interior projects and installations. With a remarkable perspective, his works are the result of continuous pursuit of beauty, with a highly personal commitment to research where light is the focus.

He has participated in solo and group exhibitions in Barcelona, New York, Milan, London, Tokyo, Mexico, among others. He has received the Delta Silver Award in 1999, 2001, and 2012, the National Design Award in 2003, and the I-Plus Award in 2009 (best lighting), among many others.

Taiga Coatstand



Martín Azúa
Vitòria, 1965

A Basque designer, he carries out his work in the city of Barcelona, where he combines teaching, product design and research with craftsmanship.

His work has a strong poetic component. The result is a coherent discourse, both in the most conceptual proposals and in everyday use objects. Very interested in the craftsmanship

and tradition of “know-how,” he has worked closely with many artisans to create objects of undeniable beauty where design and tradition are integrated with forcefulness.

Among his most well-known projects is “Casa Básica,” which has been part of the permanent collection of the MOMA in New York since 2007. He has received the City of Barcelona Award in 2000, the Delta Silver Award in 2007, the FAD Architecture / Ephemeral Award in 2008, the Design Plus Award in 2009, the Interiorismo Plus Award in 2009, and the AD Award for best designer of the year in 2010.

Luco Stool, Rambla Collection, Om Armchair



Joan Gaspar
Barcelona, 1966

Industrial designer, he began his career alongside Lluís Porqueras in lighting design. Throughout his career, Joan Gaspar has primarily designed lighting elements, furniture and pieces in other disciplines. He stands out for his attention to detail and highly ingenious solutions. His passion for design and a profound knowledge of materials and production techniques are essential elements of his designs.

In addition to design, he combines his work with product management and direction at the lighting company Maset.

Throughout his career, he has received several Delta awards, among which stand out those

awarded for the Atlas light in 2001 and for the Neón de Luz in 2005.

Hulot Coatstand



Josep Maria Jujol
1879-1949

He was an architect, draftsman, designer and Catalan modernist painter.

As a collaborator of Antoni Gaudí, he participated in his work with his own personality. The architect Gaudí entrusted him with the projection of part of his works with absolute creative freedom.

Starting from 1904, he collaborated with Gaudí in the design of the main facade of Casa Batlló or in the wrought iron railings and some of the plaster ceilings of Casa Milà (popularly known as ‘La Pedrera’), among other works.

Among Jujol’s architectural works, we highlight the Metropol Theater (1908) in Tarragona or the remodelling of Casa Bofarull (1913 - 1931) in Els Pallaresos, Tarragona.

From his collaboration with Gaudí, we highlight Casa Batlló (1904 - 1906), Casa Milà (La Pedrera) (1906 - 1910) and Park Güell (1900 - 1914), all of them in Barcelona.

Jujol 1920 Sidetable



Lagranja design

Gerard Sanmartí, Barcelona, 1974
Gabriele Schiavon, Pàdua, 1973

Lagranja Design is a design studio founded in 2002 by Gerard Sanmartí and Gabriele Schiavon in the city of Barcelona. They have become established as a team of professionals from various fields, such as product design, graphic design or interior design, with an identity that serves as the common thread for the different projects they have carried out.

Their interior designs are recognized for their strong personality. The products they design feature clear and sober lines. But above all, behind each proposal lies a research effort on form which balances fullness and rigor.

Forc Coatstand



Javier Mariscal
València, 1950

Mariscal is an image creator across all media and disciplines, who, from an innocent perspective, always dares to provoke us.

His work intertwines the different disciplines in which he works; that’s why the furniture designed by Mariscal always has a surprising visual impact where a reading

between the graphic and the object stands out.

He has been awarded the National Design Award 1999 and the National Culture Award 2011, as well as several selections and awards such as Laus ADG-FAD and Delta ADI-FAD.

Green Chair



JM Massana
Barcelona, 1947
JM Tremoleda
Barcelona, 1946

Pioneers of industrial design in Barcelona, both graduated from the Escola Massana in the first class of this discipline in 1969. In 1973, along with Mariano Ferrer, they founded Mobles 114, a furniture store and interior design studio where their initial designs and productions emerged.

Beyond their undeniable role as editors at Mobles 114, Massana - Tremoleda designed many of the furniture pieces in the catalog. Their work stands out for the emphasis placed on the functionality of the object and the departure from formalist exercises. Many of their designs continue to be part of Mobles 114’s catalog due to their timeless quality demonstrated by their long-standing presence in the market; these are pieces of furniture that, far from fleeting trends, maintain relevance and validity.

The work of Massana - Tremoleda as editors and

entrepreneurs of the Mobles 114 brand earned recognition from the jury of the 2001 National Award “for the perseverance and coherence demonstrated over the years, reflected in the quality of their products”.

Tria Shelving System, Pey Table System, Gràcia Collection, Danesa, Mirac, Bambú, Platea, Riga Collection, Oxi Bistrot.



Miguel Milá Sagnier
Barcelona, 1931

He began his career in the late 1950s and he considers himself a preindustrial designer.

His designs are the result of meticulous and seemingly simple work that has led many of his products to be recognized as icons of industrial design in our country. Milá removes all the excess from a product to focus on the essence, on what is fundamental.

He has been awarded the first edition of the National Design Award in 1987 and the Compasso D'Oro in 2008 in recognition of his career..

MMS 1963, Tombal



Montse Padrós
Badalona 1952

She is an industrial designer and interior designer trained at the Elisava Design School and the School of Arts and Crafts of Barcelona. After working for the architecture studio MBM Arquitectes (Martorell-Bohigas-Mackay), Joaquim Prats’ studio and for AD Associate Designers, she has been working freelance since 1991.

Montse Padrós’s designs are the result of observing how materials and manufacturing techniques relate to space. She also has a knack for achieving new forms for everyday uses. The Ona coat rack, designed in collaboration with Carlos Riart, is an example of this.

She received the Delta d’Or ADI FAD Award in 1992

Ona Coatstand



Lluís Pau
Castellfollit de la Roca, 1950

Industrial and interior designer, he joined the architecture studio MBM (Martorell-Bohigas-Mackay) in 1973. Starting in 1978, he took charge of the IDP studio, where he developed projects for exhibitions, museums, temporary spaces, libraries, stage sets and signposting, among others.

Lluís Pau’s designs stand out

for their minimalism in form. They are elemental designs that rely on the use of materials and structure to shape form and function. In essence, simplicity and utility.

Some of his designs belong to the permanent collection of the Barcelona Design Museum.

Nuta Stool



Eugeni Quitllet,
Eivissa, 1972

He studied in Barcelona and began his international career alongside Philippe Starck. In 2011, he returned to Barcelona and founded his own studio.

Eugeni Quitllet is endowed with a creative capacity that always surprises and a brilliant expressiveness. He has been described as a renovator, tireless seeker and tech enthusiast. For Quitllet, design revolves around thinking about what has not yet been created, whether it's an object or an idea, but always projecting into the future.

Tube Collection



Carles Riart
Barcelona, 1944

Carles Riart is an unclassifiable designer. He is highly interested in the constructive knowledge of furniture. After his training at the Eina School, he worked closely with a cabinetmaking workshop with which he developed a significant part of his work. Carles Riart could be defined more as a “furniture maker” rather

than a designer in the more usual sense of the word.

He has been awarded the Furniture Contemporary Resources Council Prize (New York, 1983), the European Top-Ten Award (Cologne, 1994), the Grand Prix de la Presse Internationale (Paris, 1994), and the National Design Award in 2011, in addition to numerous Delta awards, among which the Delta d'Or for the “ONA” coat rack stands out, designed jointly with Montse Padrós in 1992.

Ona Coatstand



André Ricard
Barcelona, 1929

Internationally renowned designer, he has designed packaging, household utensils, lighting fixtures, household appliances and furniture pieces that have become part of the daily domestic landscape. Among his most famous works are the design of the Copenhagen ashtray, edited by Mobles 114, and the Olympic torch for the 1992 Barcelona Olympic Games.

André Ricard has been recognized with the National Design Award of Spain, the *Creu de Sant Jordi* of the Generalitat de Catalunya, the Olympic Order of the International Olympic Committee, the Gold Medal for Artistic Merit of the city of Barcelona, and he is also a Chevalier des Arts et des Lettres and a Chevalier de la Légion d'Honneur in France.

Copenhaguen 1966, Tong 1964



Germán Rodríguez Arias
Barcelona, 1902 - 1987

Catalan architect and designer, he was instrumental, along with Josep Lluís Sert, Josep Torres Clavé, Sixte Illescas and Ricardo de Churruga, among others, in introducing architectural rationalism to Catalonia. He was a founding member of the GATCPAC.

With Cristián Aguadé and Claudi Tarragó, he founded the company Muebles Sur, which became one of the most important furniture factories in Chile.

In 1957, he returned to his native country and settled in Ibiza, where he was reunited with his colleagues Sert, Prats, and Illescas. In Ibiza, he worked as a municipal architect and balanced this activity with his private architectural practice, mainly focusing on hotels and residences. His own house in Portinatx stands out among his projects.

Catalana 1942



Álvaro Siza Vieira
Matosinhos, 1933

Álvaro Siza was born in Matosinhos, Portugal. An architect of international renown initially recognized for his early works in Portugal, he is known for the elegance and respectful integration of architecture with the landscape. Examples of this integration include the Marés swimming pools in Leça de Palmeira or the Da Boa Nova restaurant.

His architecture stands out for its minimalism and efficiency, devoid of artifice, conveying a sense of serenity. Siza has left his mark in many countries, always maintaining the ability to evoke emotions through

his work. He has received numerous architecture awards, notably including the Mies Van der Rohe Award in 1988 and the Pritzker Prize in 1992.

Fil 1991



Josep Torres Clavé
Barcelona, 1906 - Els Omellons, 1939

Architect, urban planner, designer and educator. A founding member of GATCPAC (Group of Catalan Artists and Technicians for the Progress of Contemporary Architecture) and a prominent advocate for rationalist architecture in our country.

He began his career as an architect alongside Josep Lluís Sert and Antoni Bonet Castellana. He directed the magazine AC (A.C. Documents of Contemporary Activity), through which he introduced artists such as Le Corbusier, Walter Gropius, Mies van der Rohe, Erich Mendelsohn, Van Doesburg, Neutra, Lubetkin, Joan Miró or Pablo Picasso.

In his short career as a designer, he left a brief but significant imprint. He designed chairs, tables, and lamps among other pieces of furniture, he designed chairs, tables and lamps. The one that stands out the most is the Torres Clavé armchair, reissued by Mobles 114.

Josep Torres Clavé died at the age of 33 during the Spanish Civil War.

Torres Clavé 1934

We are committed to...

Creation

Creating furniture designed by authors who seek simplicity and avoid the unnecessary to obtain furniture or objects that endure over time.

Sustainability

Fostering 100% local production and a continuous improvement process of products and production processes with the aim of reducing our environmental impact.

Production

Maintaining a close relationship with a local network of suppliers from the province of Barcelona since our beginnings.

People

Promoting the teamwork of all the people involved in the company; whether it's the people who are part of it or our suppliers and customers who participate in the sale of quality products for people who value them.

Memory

Recovering furniture and objects that we believe are part of the material heritage of our culture. We do this through the search for furniture that is not on the market and that we incorporate into our Classics collection.



Classic Collection

With the Classic collection, we aim to rescue furniture and objects from oblivion or museum collections because we believe they are part of the material heritage of our culture. We do this through the search for furniture that is not on the market and that we incorporate because, due to their conception and design, they retain their relevance intact.



Torres Clavé 1934

Josep Torres Clavé
Barcelona 1906 - Els Omellons 1939



The architect Josep Torres Clavé designed this armchair in 1934 to furnish the Pavilion of the Spanish Republic at the 1937 International Exhibition in Paris, next to works such as Guernica by Pablo Picasso and others by Alexander Calder or Joan Miró.

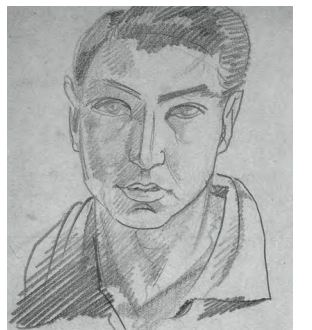
The Torres Clavé armchair is inspired by the traditional chair from Ibiza.

It has formed part of the Permanent Collection at Barcelona's Design Museum since 1994. It is produced using traditional processes and is one of the iconic pieces in the classics of international design.



01

Torres Clavé armchair was exhibited at the International Exhibition in Paris in 1937 along with other world-renowned artworks such as Picasso's Guernica.



02

01 Pavilion of the Spanish Republic,
International Exhibition in Paris 1937.
Photo by François Kollar

02 Self-portrait (Josep Torres Clavé)

Catalana 1942

Germán Rodríguez Arias
Barcelona 1902 - 1987



During his time in Chile, German Rodríguez Arias met Pablo Neruda and struck up a long-lasting friendship with him.

Among others, Rodríguez Arias designed the house at Chascona and the extension of Isla Negra, two of the poet's homes. The Catalana armchair formed part of the furniture that the architect and designer created for Isla Negra.

Mobles 114 has revived the Catalana armchair by Rodriguez Arias following the original design as closely as possible.



03

Rodríguez Arias designed several houses for Pablo Neruda in Chile, among others, the enlargement of Isla Negra, and part of the furniture, such as the Catalana armchair.



03 Pablo Neruda's house in Chile.
Photo by Díaz Wichmann

04 Germán Rodríguez Arias and his wife

04

MMS 1963

Miguel Milá
Barcelona 1931



MMS is the reissue of the Superponible table, a lightweight, small and stackable side table, suitable for any place in the house due to its shape and various possible compositions, such as a bedside table, auxiliary table or coffee table in the living room or other spaces.

This piece of furniture has been re-released to underline the fact that the MMS 1963 table is one of our country's design classics.



05

MMS table was part of the furniture for Casa Pairal in Espolla, renovated by the architect José Antonio Coderch.



05 Casa Pairal, Espolla (1964)
06 Portrait of Miguel Milá
by Maria Espeus.

06

Jujol 1920

Josep Maria Jujol
Tarragona 1879 - Barcelona 1949



The Jujol table was designed between 1920 and 1927 by the architect Josep Maria Jujol. This is a reproduction of the table exhibited at the MNAC (National Art Museum of Catalonia).

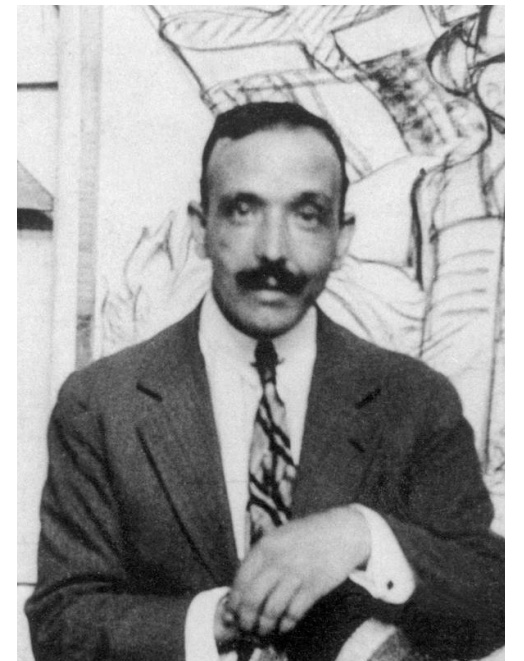
It comes from the house where JM Jujol lived, in Rambla de Catalunya in Barcelona. Based on the way it was built, we can conclude that it's a prototype, a unique model which we have reproduced and now forms part of the Mobles 114 Classics catalogue.

Jujol 1920 is a side table that wants to be seen as a work of art; a versatile table that adds dignity, sobriety and elegance to any interior design.



07

The Jujol table is a re-edition of the one exhibited permanently at the MNAC (National Art Museum of Catalonia).



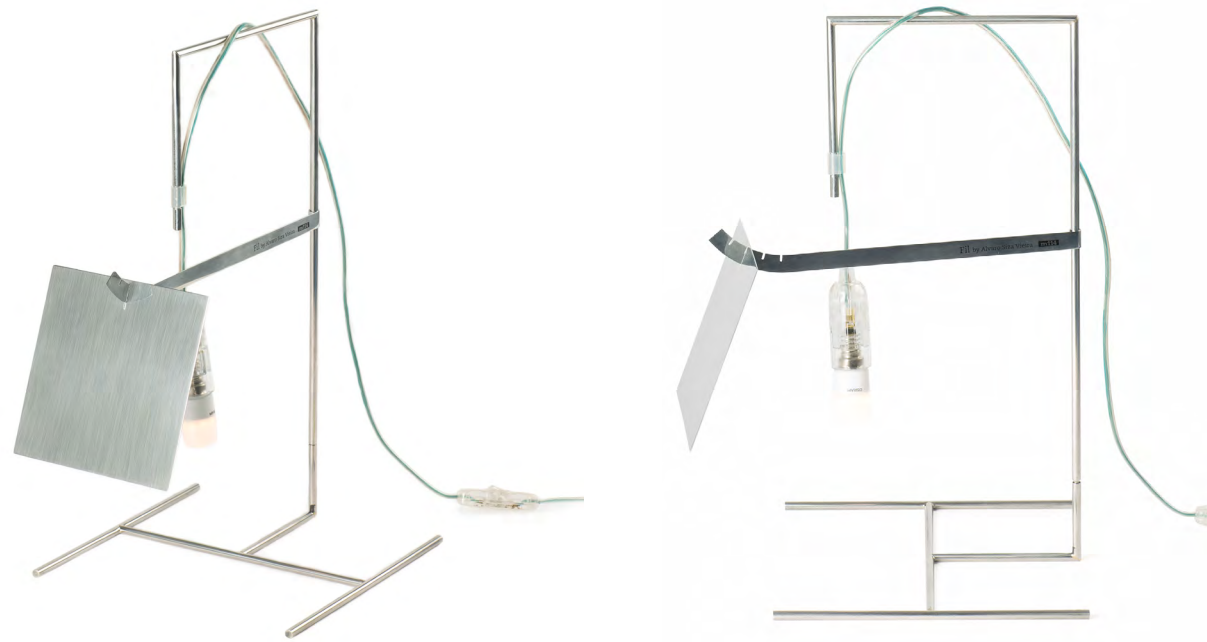
07 Permanent exhibition in MNAC
(National Art Museum of Catalonia)

08 Portrait of Josep Maria Jujol.

08

Fil 1991

Álvaro Siza
Matosinhos, 1933



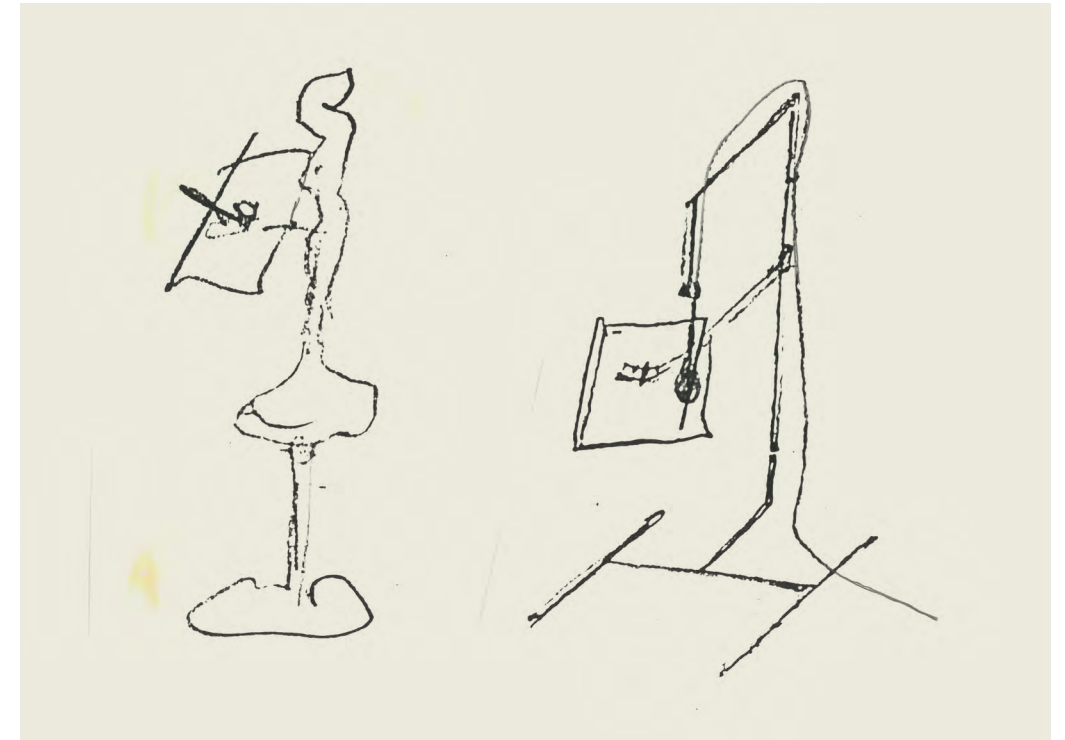
Fil is a table lamp designed in 1991 by the architect Alvaro Siza Vieira which reveals without pretence the essence of an electric light: a support, the electric wire with the lightbulb and a shade.

A light that forgoes ornaments, inspired by the evolution of brass or bronze oil lamps that included a shade to avoid dazzle.

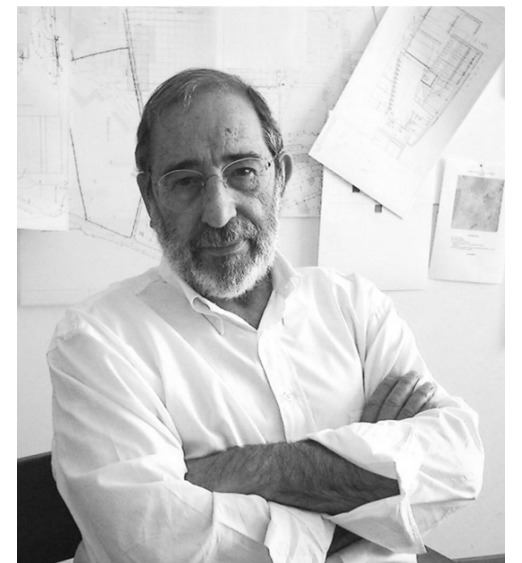
Made of stainless steel, the Fil lamp by Siza Vieira forms part of the Classics catalogue of Mobles 114 thanks to its contemporary roots and in homage to one of today's great architects.

“Before there was electricity, in my grandparents’ house there were oil lamps with a rectangular plate protecting the flame from the front side. The result was an indirect light reflected on the wall, a fact that has always pleased the architect Álvaro Siza.”

— Eduardo Souto de Moura



09



10

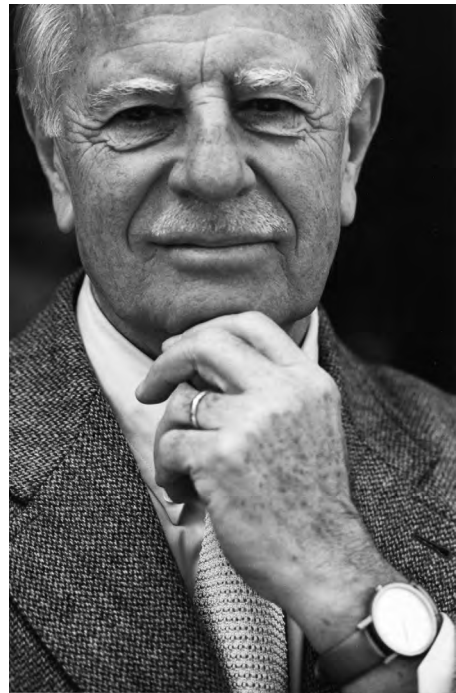
09 First sketches by Álvaro Siza

10 Portrait of Álvaro Siza.

Copenhaguen 1966

André Ricard
Barcelona, 1929

Copenhaguen ashtray is the result of a geometric design that uses the simple repetition of a cylinder.



11

This is a hard-wearing, stackable ashtray that fulfils its function with utmost effectiveness. This design classic is in line with the goal of Mobles 114, which, for more than 20 years, has remained in the market to preserve our country's heritage in terms of both culture and design. The Copenhagen ashtray won the ADI-FAD Delta Silver Prize 1966.



Tong 1964

André Ricard
Barcelona, 1929

André Ricard designed these tongs in 1964 for ice cubes back in the day when plastic was a relatively new material.



12

11 Portrait of André Ricard.

12 First model of the ice tong
by André Ricard (1964)

These ice tongs, relaunched in 2018, are an updated version of the ones designed by André Ricard in 1964.

A devotee of simplicity and functionalism, André Ricard designed these tongs for ice cubes back in the day when plastic was a relatively new material. This gave the designer the chance to rethink an object that had always been produced in the same way.

In Ricard's design, the tongs' shape is used to fulfill their purpose. His masterful solution takes advantage of the tong's leverage and the flexibility inherent in plastic.

Our products

JM Massana & JM Tremoleda

Tria Shelving System



13

Designed in 1978 by JM Massana and JM Tremoleda and produced by Mobles 114, it's an example of timeless furniture that has become an icon in contemporary shelving. More than 45 years of continuous presence in the market, it establishes itself as an essential element for any contemporary interior space.

13 Tria Shelving System and Pey Table System designed by JM Massana & JM Tremoleda.
Tube Collection designed by Eugeni Quittlet.



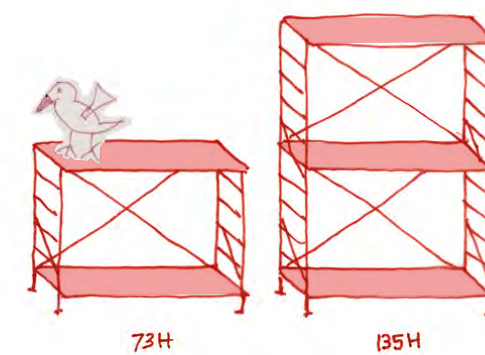
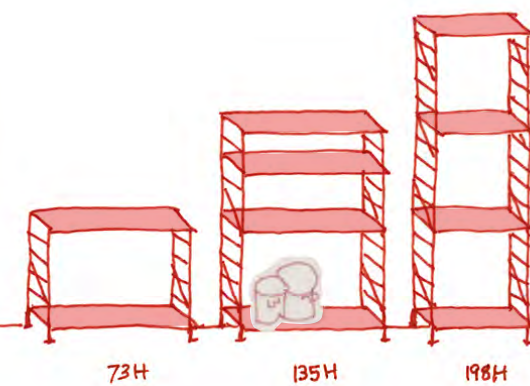
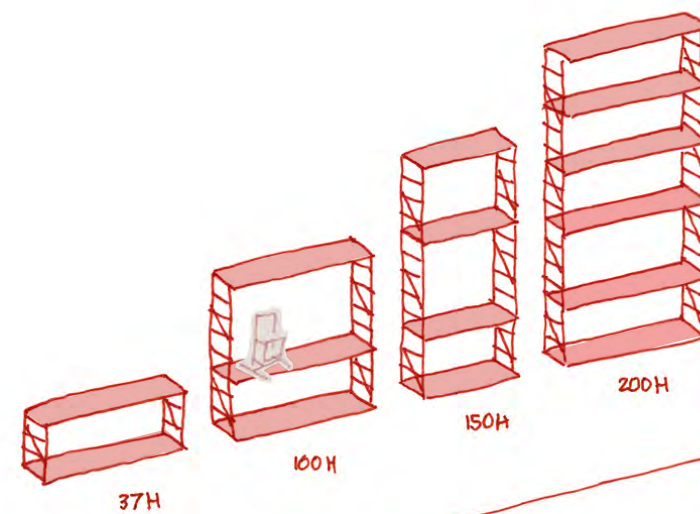
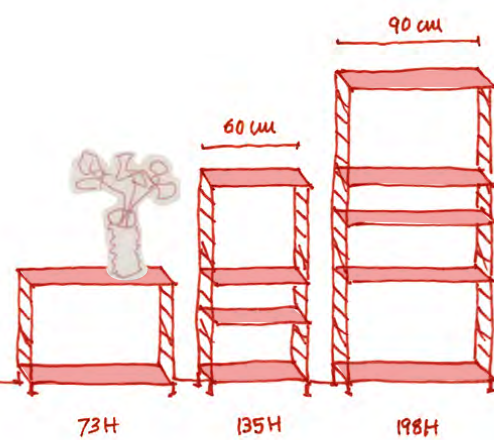
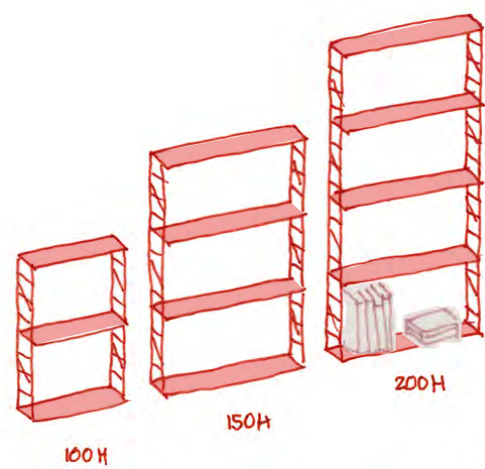


24 cm depth
Wall

24 cm depth
Floor (wall mounted)

36 cm depth
Wall

36 cm depth
Floor (wall mounted)



36 cm depth
Freestanding





14

14 Mirror back panel, linear light and clothes hanger bar.



15



16



17

15 Tria Floor (wall mounted) with clothes hanger bar, drawer, grid and inclined shelves.

Luco stool by Martín Azúa.

16 Tria Freestanding with clothes hanger bar and inclined shelf.

17 Tria Wall with grid shelves, drawers and clothes hanger bar.



18

- 18 Bedside Tria Shelving System with a drawer.
- 19 Tria wall with white display cabinet and linear light accessory.



19



20

20 Detail of the retractable door with brake of Tria Shelving System cabinet.

The simple and lightweight forms of this modular shelving unit suit all needs and different spaces, whether in residential areas or professional environments. It can be used in bathrooms, libraries, dressing rooms, home offices, children's rooms, kitchens, living rooms, professional offices, retail spaces, among others. The variety of finishes offers the possibility to personalize compositions by combining materials, colors, and accessories to meet various functional and decorative needs.



One of its main features, linked to its timeless design, is its durability and quality, allowing it to adapt to new needs or functions. Since 1978, the system has evolved by incorporating new elements in order to adapt Tria to the changing demands of daily life. The latest innovation has been the introduction of the self-supporting version with bar crosses, without altering its essence or aesthetics. This uniqueness makes it a shelving unit for a lifetime, a product transferable from generation to generation.

21 Tria Shelving System Freestanding in white and oak shelves.
Nuta Stool designed by Lluís Pau.



21



22



- 22 Tria Shelving System with display cabinet and linear light.
Catalana 1942 designed by Germán Rodríguez Arias.
MMS 1963 side table by Miguel Milá.









23 Floor Tria with desk.
Tube chair designed by Eugeni Quittlet.



23



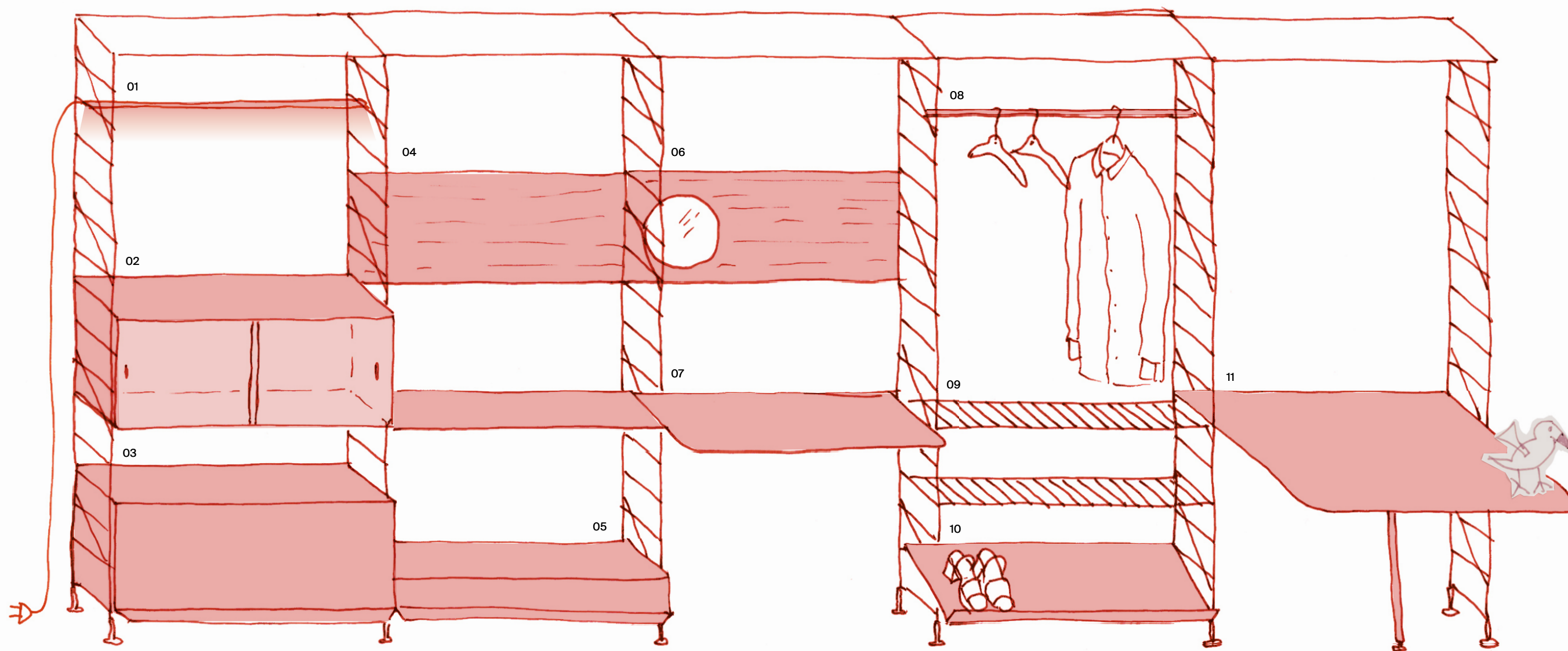
24



24 Home office Tria Shelving System.
Green chair by Javier Mariscal.
Torres Clavé 1934 armchair by
Josep Torres Clavé.

25 Tria Shelving System with back
panels and table.
Gràcia swivel chair by JM Massana
and JM Tremoleda





- | | | | | |
|--------------------|---------------|----------------------|-----------------------|----------|
| 01 Linear light | 04 Back panel | 06 Mirror back panel | 08 Clothes hanger bar | 11 Table |
| 02 Display cabinet | 05 Drawer | 07 Desk | 09 Grid shelf | |
| 03 Cabinet | | | 10 Inclined shelf | |

JM Massana & JM Tremoleda

Tria Pack Wall



JM Massana & JM Tremoleda

Tria Pack Floor (wall mounted)



JM Massana & JM Tremoleda

Tria Pack Freestanding



JM Massana & JM Tremoleda

Tria Shelf



JM Massana & JM Tremoleda

Gràcia Collection







26



27

- 26 Homeoffice with Gràcia table and swivel chair.
- 27 Single plug with USB for Gràcia table.



Javier Mariscal

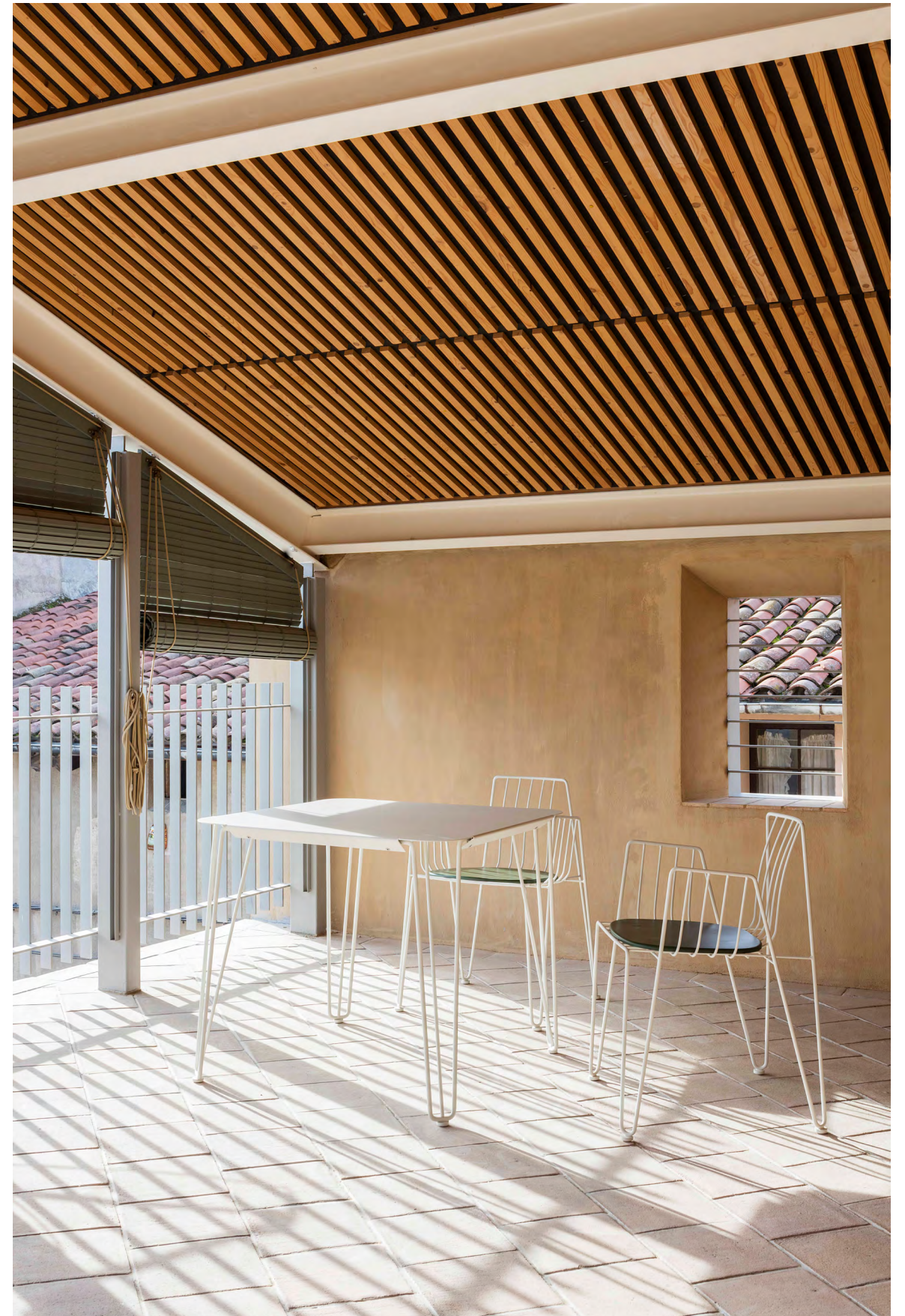
Green Collection



Martín Azúa

Rambla Collection

The Rambla collection draws its conceptual inspiration from the seats used in one of the most emblematic streets in the city of Barcelona: the Rambla.



Eugeni Quitllet

Tube Collection







28



28 Suitable for outdoor use.

Germán Rodríguez Arias

Catalana 1942



29 Its curious six-legged design is inspired by the typically Mediterranean chairs.

29



JM Massana & JM Tremoleda

Danesa





Its design shows that function determines form.
This chair has a backrest consisting of two different parts:
a cushion that includes magnets for the height to be adjusted
and the backrest itself.

Josep Torres Clavé

Torres Clavé 1934





Martín Azúa

Luco



Lluís Pau

Nuta Collection



30 Nuta Colors are ideal for environments with high humidity, such as bathrooms, as well as for exterior use.

30



53



Josep Maria Jujol

Jujol 1920



Miguel Milá

MMS 1963



JM Massana & JM Tremoleda

Pey Table System

Crafted from durable materials, it seamlessly transitions between indoor and outdoor settings, offering versatility for any environment.







JM Massana & JM Tremoleda

Bambú



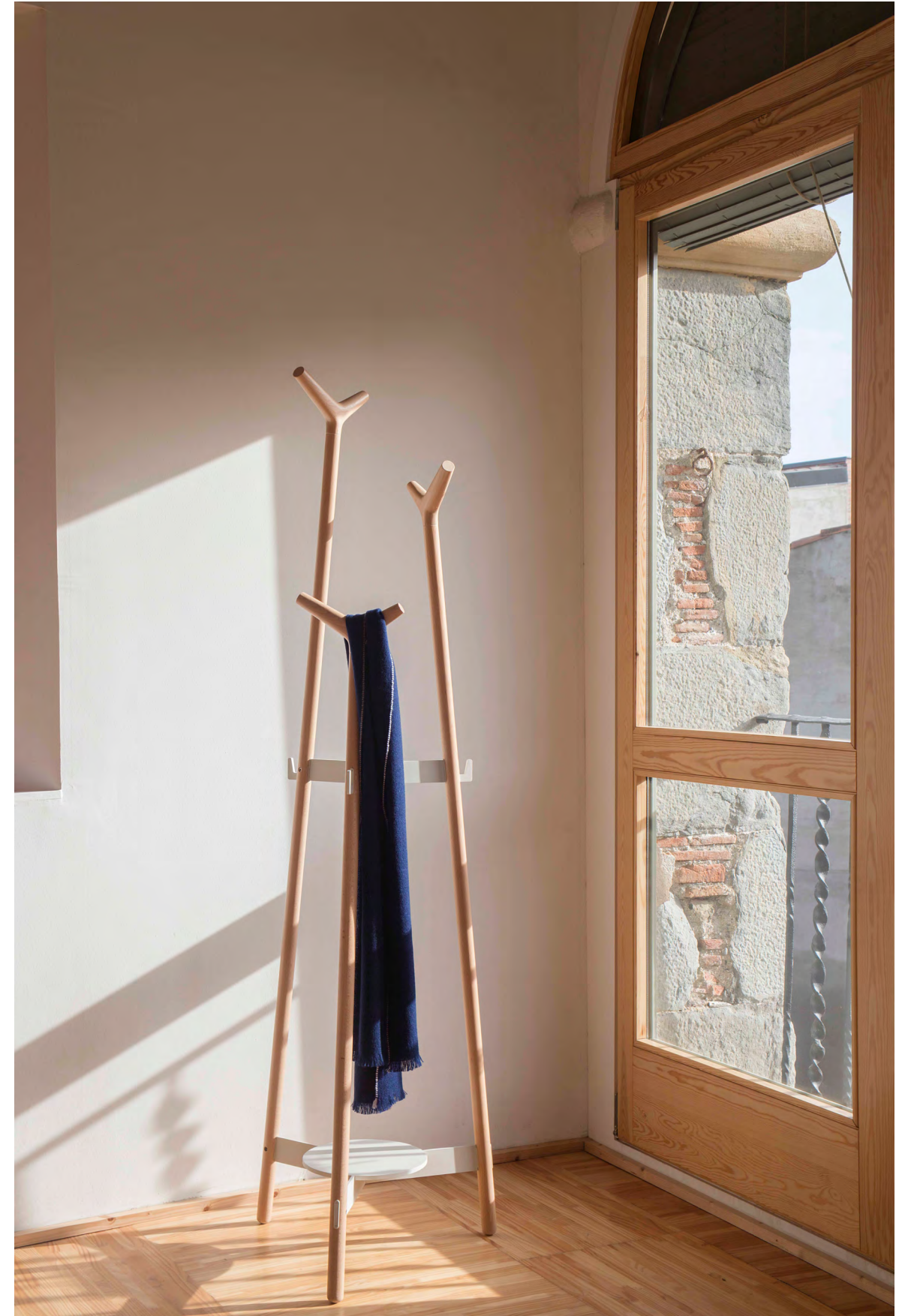
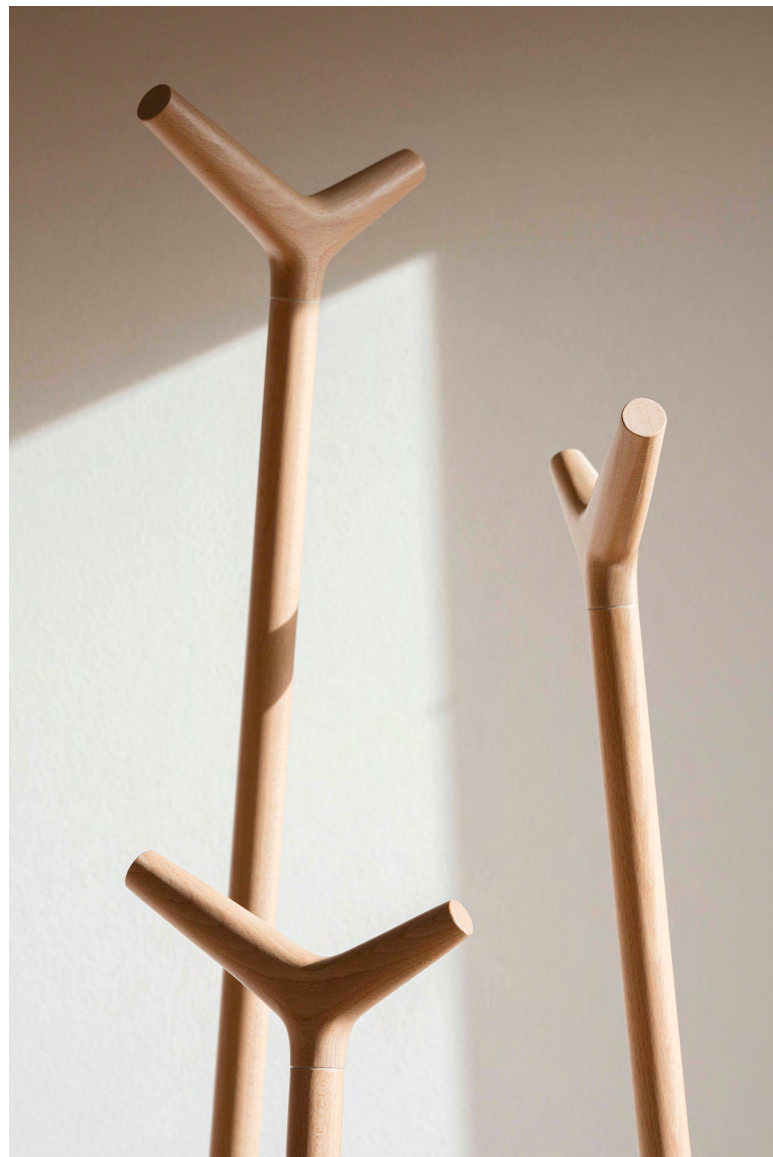
JM Massana & JM Tremoleda

Bambú Wall



Lagranja Design

Forc



JM Massana & JM Tremoleda

Mirac



JM Massana & JM Tremoleda

Mirac Wall



Carles Riart & Montse Padrós

Ona

Ona, meaning 'wave' in Catalan, reflects its fluid design, adding elegance to any space.



Miguel Milá

Tombal



André Ricard

Copenhaguen 1966



André Ricard

Tong 1964



Álvaro Siza

Fil 1991



Bringing comfort to homes and collective spaces since 1973

Furniture and objects for homes

Mobles114

Furniture for workspaces,
hospitality and public spaces

Mobles114

At Mobles 114, we aim to contribute to improve living spaces to make them more comfortable and welcoming, more beautiful and more livable, whether they are spaces for homes or communities.

Our two catalogs, **Home** and **Contract**, contribute in the same way to sustainability with durable furniture that ages well and can be passed down to future generations.

Shelving

Tria Shelving System – Wall mounted
JM Massana & JM Tremoleda



Tria Shelving System – Floor mounted
JM Massana & JM Tremoleda



Tria Shelving System – Freestanding
JM Massana & JM Tremoleda



Tria Pack Wall
JM Massana & JM Tremoleda



Tria Pack Floor (wall mounted)
JM Massana & JM Tremoleda



Tria Pack Freestanding
JM Massana & JM Tremoleda



Tria Shelf
JM Massana & JM Tremoleda



Seating

Gràcia
JM Massana & JM Tremoleda



Green
Javier Mariscal



Rambla
Martín Azúa



Tube
Eugeni Quitllet



Catalana 1942
German Rodríguez Arias



Danese
JM Massana & JM Tremoleda



Om
Martín Azúa



Torres Clavé 1934
Josep Torres Clavé



Luco
Martín Azúa



Nuta
Lluís Pau



Nuta Colors
Lluís Pau



Tables

Gràcia
JM Massana & JM Tremoleda



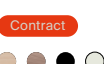
Jujol 1920
Josep Maria Jujol



MMS 1963
Miguel Milà



Oxi Bistrot
JM Massana & JM Tremoleda



Pey Central
JM Massana & JM Tremoleda



Pey Table System
JM Massana & JM Tremoleda

Residential Contract



Rambla
Martín Azúa

Residential Contract



Tube
Eugeni Quitllet

Residential Contract



Tube
Eugeni Quitllet

Residential Contract



Complements

Bambú
JM Massana & JM Tremoleda

Residential Contract



Bambú Wall
JM Massana & JM Tremoleda

Residential



Forc
Lagranja Design

Residential Contract



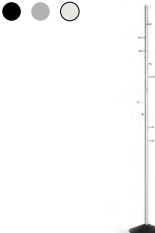
Hulot
Joan Gaspar

Contract



Mirac
JM Massana & JM Tremoleda

Residential Contract



Mirac Wall
JM Massana & JM Tremoleda

Residential Contract



Mirac Wall
JM Massana & JM Tremoleda

Residential Contract



Ona
Carles Riart i Montse Padrós

Residential Contract



Taiga
Antoni Arola

Contract



Riga
JM Massana & JM Tremoleda

Contract



Riga Recycling
JM Massana & JM Tremoleda

Contract



Riga
JM Massana & JM Tremoleda

Contract



Riga
JM Massana & JM Tremoleda

Contract



Platea
JM Massana & JM Tremoleda

Contract



Tombal
Miguel Milá

Residential Contract



Copenhaguen 1966
André Ricard

Residential



Tong 1964
André Ricard

Residential



Fil 1991
Álvaro Siza

Residential



Photography

Fernando Alda
Meritxell Arjalaguer
Martín Azúa
Lluís Casals
Estudi Es Pujol de S'Era
Leo Garcia Méndez
Adrià Goula
José Hevia
François Kollar
Salva López
Leo Garcia Méndez
Ariel Ramírez
Jordi Sarrà
Díaz Wichmann
Pablo Santos
Jara Varela

Illustrations

Marta Solsera

Mobles114

Julián Romea 16 / Baixos 2
08006 Barcelona
T. +34 932 600 114
mobles114@mobles114.com

www.mobles114.com

Mobles114