

Furniture and objects for home

Mobles114

Bringing comfort
to homes since 1973



The most sustainable design is one that lasts forever

Mobles 114 is a Barcelona-based company founded in 1973. It offers a collection of furniture and objects designed with people in mind. The furniture is intended for living spaces, regardless of trends, consciously designed and made with quality and durable materials, whether for domestic, work, or collective environments.

For over 50 years, Mobles 114 has been offering furniture and objects, some iconic, to accompany people throughout their lives with the intention that these pieces become part of their space silently and pass from generation to generation.



Our history



Mobles 114 was founded in Barcelona in 1973 by designers JM Massana, JM Tremoleda, and Mariano Ferrer. Its first headquarters were located at Carrer d'Enric Granados 114, and this is the origin of the name: a location in the heart of a city that was beginning to experience social and cultural changes that had started in Europe in 1968. The company was initially established as an interior design studio and store, offering a selection of products manufactured by local companies and other contemporary designs imported from European countries, while also initiating their own designs and productions.

Massana and Tremoleda not only design but also curate a collection of furniture and objects where tradition and modernity converge. This collection is influenced by the proposals promoted by the architects of the GATCPAC

during the 1930s, who participated in European architectural rationalism, with figures such as Le Corbusier, Ludwig Mies van der Rohe, or Walter Gropius, among others. However, these influences did not make them forget their Mediterranean roots. Tradition is represented in the recovery and reissue of classics from Catalan design, while modernity is evident in their own proposals and in the choice of designers or authors who will sign for the Mobles 114 catalog.

Over these 50 years, furniture and objects designed by Álvaro Siza, André Ricard, Antoni Arola, Carlos Riart, Enzo Mari, Eugeni Quitllet, Gabriel Mora, Gabriel Ordeig, Germán Rodríguez Arias, Isamu Noguchi, Isidre Ferrer, Mariano Ferrer, Javier Mariscal, Joan Gaspar, Jorge



Pensi, José Antonio Coderch, Josep Maria Jujol, Josep Torres Clavé, Lagranja, Lluís Pau, Lluís Porqueras, Martín Azúa, Massana-Tremoleda, Josep Mora, Miguel Milá, Montse Padrós, Oscar Tusquets, Pete Sans, Rafael Marquina, and Santiago Roqueta have participated in our catalog.

Mobles 114 has received several awards, but we are convinced that the best recognition is not awarded by a jury, but by the people who live with our furniture. For decades, this recognition has made it possible for the timelessness of furniture and objects to endure through generations.

This spirit of permanence, of enduring forever, of accompaniment, is what has guided us as a company to act with coherence and understatement, maintaining a profound respect for tradition and a sincere admiration for modernity.

“I am exalted by the new, enamored of the old.”
— J.V. Foix. Sol, i de dol (1947).

Editions, designers and authors

Mobles 114 undertakes a commitment to creating furniture designed by authors who prioritize simplicity and avoid the unnecessary to obtain pieces that endure over time.

Over these five decades, we have developed a catalog of products in collaboration with designers and authors from various fields who contribute their knowledge to find the best solutions. This teamwork strengthens both the product and the designer and the company.

Such editing process, initiated by the founders JM Massana and JM Tremoleda, turns into a catalog with its own personality which remains relevant and always takes care of the forms, materials and uses to ensure they are useful, comfortable, discreet and durable.



Meet the designers



Josep Maria Jujol
1879-1949

He was an architect, draftsman, designer and Catalan modernist painter.

As a collaborator of Antoni Gaudí, he participated in his work with his own personality. The architect Gaudí entrusted him with the projection of part of his works with absolute creative freedom.

Starting from 1904, he collaborated with Gaudí in the design of the main facade of Casa Batlló or in the wrought iron railings and some of the plaster ceilings of Casa Milà (popularly known as 'La Pedrera'), among other works.

Among Jujol's architectural works, we highlight the Metropol Theater (1908) in Tarragona or the remodelling of Casa Bofarull (1913 - 1931) in Els Pallaresos, Tarragona.

From his collaboration with Gaudí, we highlight Casa Batlló (1904 - 1906), Casa Milà (La Pedrera) (1906 - 1910) and Park Güell (1900 - 1914), all of them in Barcelona.

Jujol 1920 Sidetable



JM Massana
Barcelona, 1947
JM Tremoleda
Barcelona, 1946

Pioneers of industrial design in Barcelona, both graduated from the Escola Massana in the first class of this discipline in 1969. In 1973, along with Mariano Ferrer, they founded Mobles 114, a furniture store and interior design studio where their initial designs and productions emerged.

Beyond their undeniable role as editors at Mobles 114, Massana - Tremoleda designed many of the furniture pieces in the catalog. Their work stands out for the emphasis placed on the functionality of the object and the departure from formalist exercises. Many of their designs continue to be part of Mobles 114's catalog due to their timeless quality demonstrated by their long-standing presence in the market; these are pieces of furniture that, far from fleeting trends, maintain relevance and validity.

The work of Massana - Tremoleda as editors and entrepreneurs of the Mobles 114 brand earned recognition from the jury of the 2001 National Award "for the perseverance and coherence demonstrated over the years, reflected in the quality of their products".

Tria Shelving System, Pey Table System, Danesa



Miguel Milá Sagnier
Barcelona, 1931

He began his career in the late 1950s and he considers himself a preindustrial designer.

His designs are the result of meticulous and seemingly simple work that has led many of his products to be recognized as icons of industrial design in our country. Milá removes all the excess from a product to focus on the essence, on what is fundamental.

He has been awarded the first edition of the National Design Award in 1987 and the Compasso D'Oro in 2008 in recognition of his career..

MMS 1963, Tombal



Montse Padrós
Badalona 1952

She is an industrial designer and interior designer trained at the Elisava Design School and the School of Arts and Crafts of Barcelona. After working for the architecture studio MBM Arquitectes (Martorell-Bohigas-Mackay), Joaquim Prats' studio and for AD Associate Designers, she has been working freelance since 1991.

Montse Padrós's designs are the result of observing how materials and manufacturing techniques relate to space. She also has a knack for achieving new forms for everyday uses. The Ona coat rack, designed in collaboration with Carlos Riart, is an example of this.

She received the Delta d'Or ADI FAD Award in 1992

Ona Coatstand



Carles Riart
Barcelona, 1944

Carles Riart is an unclassifiable designer. He is highly interested in the constructive knowledge of furniture. After his training at the Eina School, he worked closely with a cabinetmaking workshop with which he developed a significant part of his work. Carles Riart could be defined more as a "furniture maker" rather than a designer in the more usual sense of the word.

He has been awarded the Furniture Contemporary Resources Council Prize (New York, 1983), the European Top-Ten Award (Cologne, 1994), the Grand Prix de la Presse Internationale (Paris, 1994), and the National Design Award in 2011, in addition to numerous Delta awards, among which the Delta d'Or for the "ONA" coat rack stands out, designed jointly with Montse Padrós in 1992.

Ona Coatstand



André Ricard
Barcelona, 1929

Internationally renowned designer, he has designed packaging, household utensils, lighting fixtures, household appliances and furniture pieces that have become part of the daily domestic landscape. Among his most famous works are the design of the Copenhagen ashtray, edited by Mobles 114, and the Olympic torch for the 1992 Barcelona Olympic Games.

André Ricard has been recognized with the National Design Award of Spain, the *Creu de Sant Jordi* of the Generalitat de Catalunya, the Olympic Order of the International Olympic Committee, the Gold Medal for Artistic Merit of the city of Barcelona, and he is also a Chevalier des Arts et des Lettres and a Chevalier de la Légion d'Honneur in France.

Copenhaguen 1966, Tong 1964



Germán Rodríguez Arias
Barcelona, 1902 - 1987

Catalan architect and designer, he was instrumental, along with Josep Lluís Sert, Josep Torres Clavé, Sixte Illescas and Ricardo

de Churruga, among others, in introducing architectural rationalism to Catalonia. He was a founding member of the GATCPAC.

With Cristián Aguadé and Claudi Tarragó, he founded the company Muebles Sur, which became one of the most important furniture factories in Chile.

In 1957, he returned to his native country and settled in Ibiza, where he was reunited with his colleagues Sert, Prats, and Illescas. In Ibiza, he worked as a municipal architect and balanced this activity with his private architectural practice, mainly focusing on hotels and residences. His own house in Portinatx stands out among his projects.

Catalana 1942



Álvaro Siza Vieira
Matosinhos, 1933

Álvaro Siza was born in Matosinhos, Portugal. An architect of international renown initially recognized for his early works in Portugal, he is known for the elegance and respectful integration of architecture with the landscape. Examples of this integration include the Marés swimming pools in Leça de Palmeira or the Da Boa Nova restaurant.

His architecture stands out for its minimalism and efficiency, devoid of artifice, conveying a sense of serenity. Siza has left his mark in many countries, always maintaining the ability to evoke emotions through his work. He has received numerous

architecture awards, notably including the Mies Van der Rohe Award in 1988 and the Pritzker Prize in 1992.

Fil 1991



Josep Torres Clavé
Barcelona, 1906 - Els Omellons, 1939

Architect, urban planner, designer and educator. A founding member of GATCPAC (Group of Catalan Artists and Technicians for the Progress of Contemporary Architecture) and a prominent advocate for rationalist architecture in our country.

He began his career as an architect alongside Josep Lluís Sert and Antoni Bonet Castellana. He directed the magazine AC (A.C. Documents of Contemporary Activity), through which he introduced artists such as Le Corbusier, Walter Gropius, Mies van der Rohe, Erich Mendelsohn, Van Doesburg, Neutra, Lubetkin, Joan Miró or Pablo Picasso.

In his short career as a designer, he left a brief but significant imprint. He designed chairs, tables, and lamps among other pieces of furniture, he designed chairs, tables and lamps. The one that stands out the most is the Torres Clavé armchair, reissued by Mobles 114.

Josep Torres Clavé died at the age of 33 during the Spanish Civil War.

Torres Clavé 1934

We are committed to...

Creation

Creating furniture designed by authors who seek simplicity and avoid the unnecessary to obtain furniture or objects that endure over time.

Sustainability

Fostering 100% local production and a continuous improvement process of products and production processes with the aim of reducing our environmental impact.

Production

Maintaining a close relationship with a local network of suppliers from the province of Barcelona since our beginnings.

People

Promoting the teamwork of all the people involved in the company; whether it's the people who are part of it or our suppliers and customers who participate in the sale of quality products for people who value them.

Memory

Recovering furniture and objects that we believe are part of the material heritage of our culture. We do this through the search for furniture that is not on the market and that we incorporate into our Classics collection.



Classic Collection

With the Classic collection, we aim to rescue furniture and objects from oblivion or museum collections because we believe they are part of the material heritage of our culture. We do this through the search for furniture that is not on the market and that we incorporate because, due to their conception and design, they retain their relevance intact.



Torres Clavé 1934

Josep Torres Clavé
Barcelona 1906 - Els Omellons 1939



The architect Josep Torres Clavé designed this armchair in 1934 to furnish the Pavilion of the Spanish Republic at the 1937 International Exhibition in Paris, next to works such as Guernica by Pablo Picasso and others by Alexander Calder or Joan Miró.

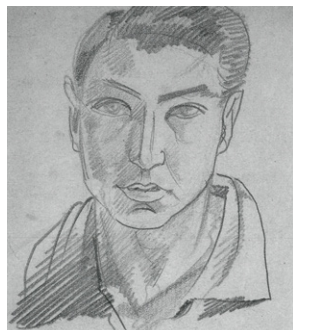
The Torres Clavé armchair is inspired by the traditional chair from Ibiza.

It has formed part of the Permanent Collection at Barcelona's Design Museum since 1994. It is produced using traditional processes and is one of the iconic pieces in the classics of international design.



01

Torres Clavé armchair was exhibited at the International Exhibition in Paris in 1937 along with other world-renowned artworks such as Picasso's Guernica.



02

01 Pavilion of the Spanish Republic,
International Exhibition in Paris 1937.
Photo by François Kollar

02 Self-portrait (Josep Torres Clavé)

Catalana 1942

Germán Rodríguez Arias
Barcelona 1902 - 1987



During his time in Chile, German Rodríguez Arias met Pablo Neruda and struck up a long-lasting friendship with him.

Among others, Rodríguez Arias designed the house at Chascona and the extension of Isla Negra, two of the poet's homes. The Catalana armchair formed part of the furniture that the architect and designer created for Isla Negra.

Mobles 114 has revived the Catalana armchair by Rodriguez Arias following the original design as closely as possible.



03

Rodríguez Arias designed several houses for Pablo Neruda in Chile, among others, the enlargement of Isla Negra, and part of the furniture, such as the Catalana armchair.



03 Pablo Neruda's house in Chile.
Photo by Díaz Wichmann

04 Germán Rodríguez Arias and his wife

04

MMS 1963

Miguel Milá
Barcelona 1931



MMS is the reissue of the Superponible table, a lightweight, small and stackable side table, suitable for any place in the house due to its shape and various possible compositions, such as a bedside table, auxiliary table or coffee table in the living room or other spaces.

This piece of furniture has been re-released to underline the fact that the MMS 1963 table is one of our country's design classics.



05

MMS table was part of the furniture for Casa Pairal in Espolla, renovated by the architect José Antonio Coderch.



05 Casa Pairal, Espolla (1964)

06 Portrait of Miguel Milá
by María Espeus.

06

Jujol 1920

Josep Maria Jujol
Tarragona 1879 - Barcelona 1949



The Jujol table was designed between 1920 and 1927 by the architect Josep Maria Jujol. This is a reproduction of the table exhibited at the MNAC (National Art Museum of Catalonia).

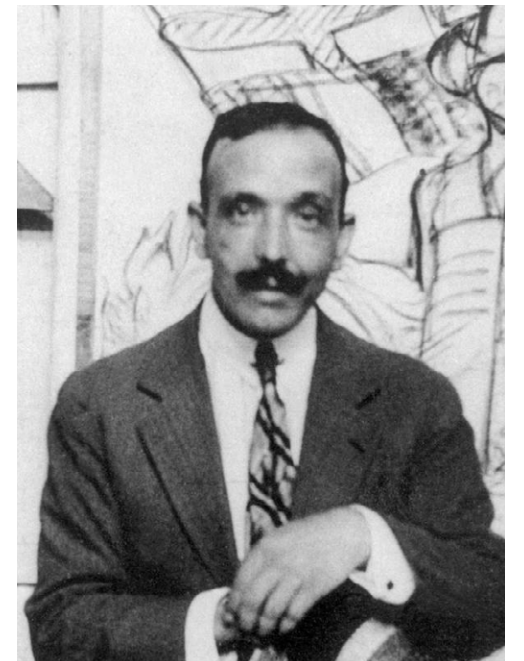
It comes from the house where JM Jujol lived, in Rambla de Catalunya in Barcelona. Based on the way it was built, we can conclude that it's a prototype, a unique model which we have reproduced and now forms part of the Mobles 114 Classics catalogue.

Jujol 1920 is a side table that wants to be seen as a work of art; a versatile table that adds dignity, sobriety and elegance to any interior design.



07

The Jujol table is a re-edition of the one exhibited permanently at the MNAC (National Art Museum of Catalonia).



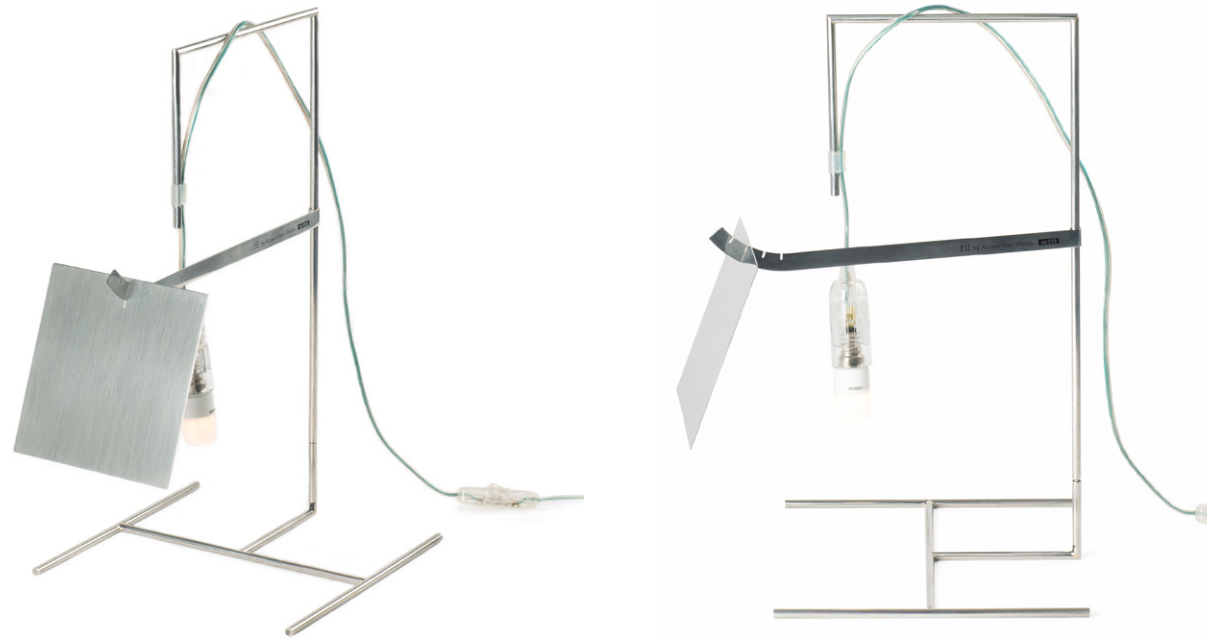
07 Permanent exhibition in MNAC
(National Art Museum of Catalonia)

08 Portrait of Josep Maria Jujol.

08

Fil 1991

Álvaro Siza
Matosinhos, 1933



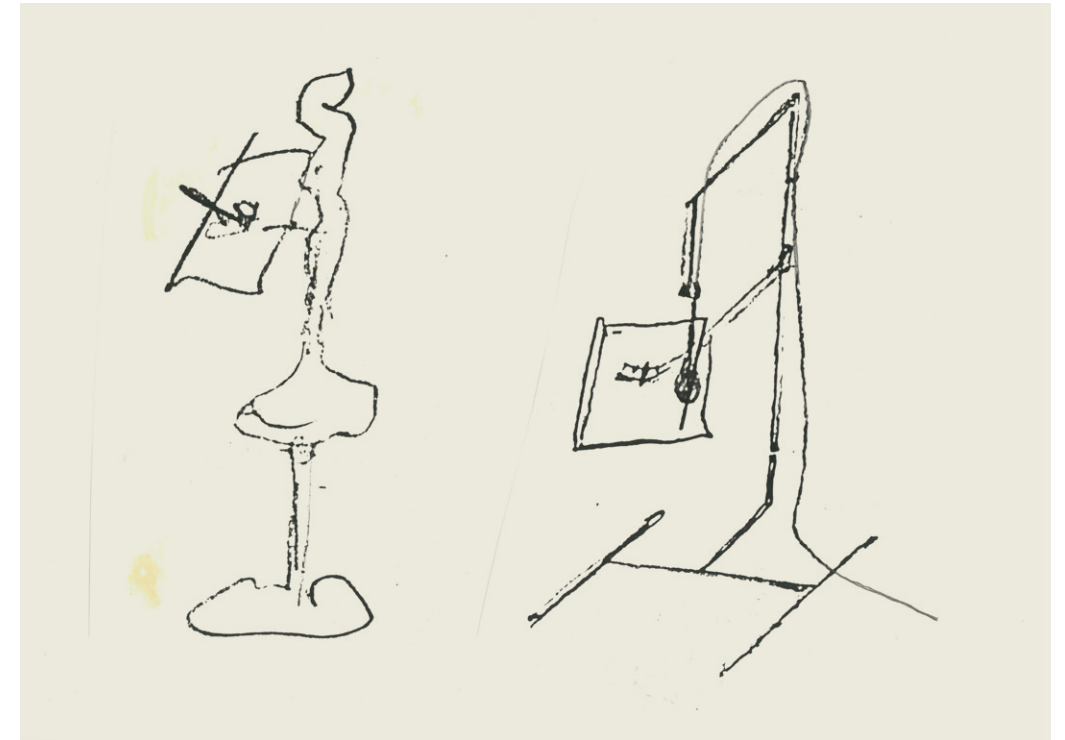
Fil is a table lamp designed in 1991 by the architect Alvaro Siza Vieira which reveals without pretence the essence of an electric light: a support, the electric wire with the lightbulb and a shade.

A light that forgoes ornaments, inspired by the evolution of brass or bronze oil lamps that included a shade to avoid dazzle.

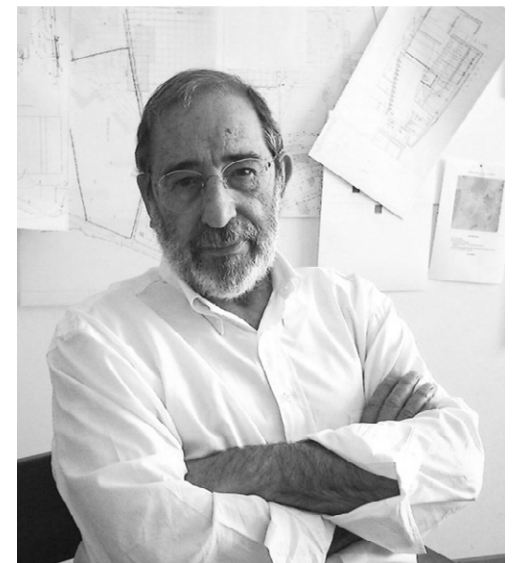
Made of stainless steel, the Fil lamp by Siza Vieira forms part of the Classics catalogue of Mobles 114 thanks to its contemporary roots and in homage to one of today's great architects.

“Before there was electricity, in my grandparents’ house there were oil lamps with a rectangular plate protecting the flame from the front side. The result was an indirect light reflected on the wall, a fact that has always pleased the architect Álvaro Siza.”

— Eduardo Souto de Moura



09



10

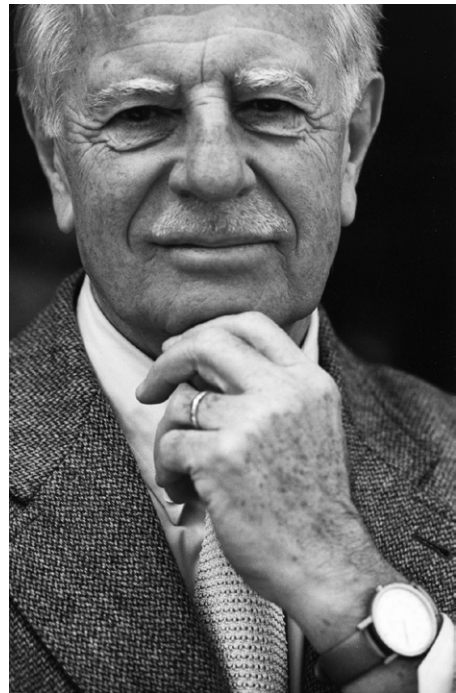
09 First sketches by Álvaro Siza

10 Portrait of Álvaro Siza.

Copenhaguen 1966

André Ricard
Barcelona, 1929

Copenhaguen ashtray is the result of a geometric design that uses the simple repetition of a cylinder.



11

This is a hard-wearing, stackable ashtray that fulfils its function with utmost effectiveness. This design classic is in line with the goal of Mobles 114, which, for more than 20 years, has remained in the market to preserve our country's heritage in terms of both culture and design. The Copenhagen ashtray won the ADI-FAD Delta Silver Prize 1966.



Tong 1964

André Ricard
Barcelona, 1929

André Ricard designed these tongs in 1964 for ice cubes back in the day when plastic was a relatively new material.



12

11 Portrait of André Ricard.

12 First model of the ice tong
by André Ricard (1964)

These ice tongs, relaunched in 2018, are an updated version of the ones designed by André Ricard in 1964.

A devotee of simplicity and functionalism, André Ricard designed these tongs for ice cubes back in the day when plastic was a relatively new material. This gave the designer the chance to rethink an object that had always been produced in the same way.

In Ricard's design, the tongs' shape is used to fulfill their purpose. His masterful solution takes advantage of the tong's leverage and the flexibility inherent in plastic.

Our products

JM Massana & JM Tremoleda

Tria Shelving System



13

Designed in 1978 by JM Massana and JM Tremoleda and produced by Mobles 114, it's an example of timeless furniture that has become an icon in contemporary shelving. More than 45 years of continuous presence in the market, it establishes itself as an essential element for any contemporary interior space.

13 Tria Shelving System and Pey Table System designed by JM Massana & JM Tremoleda.



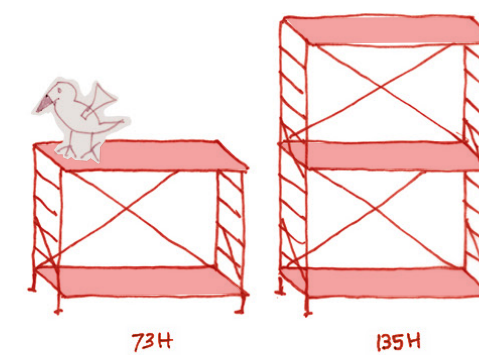
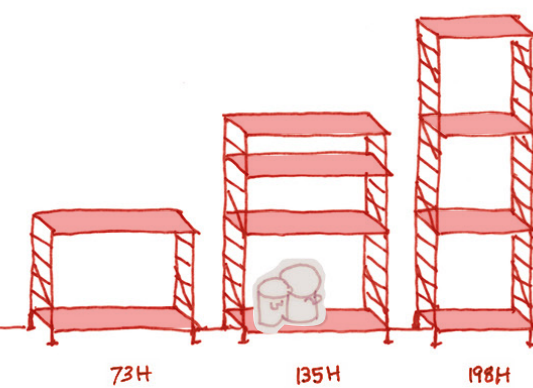
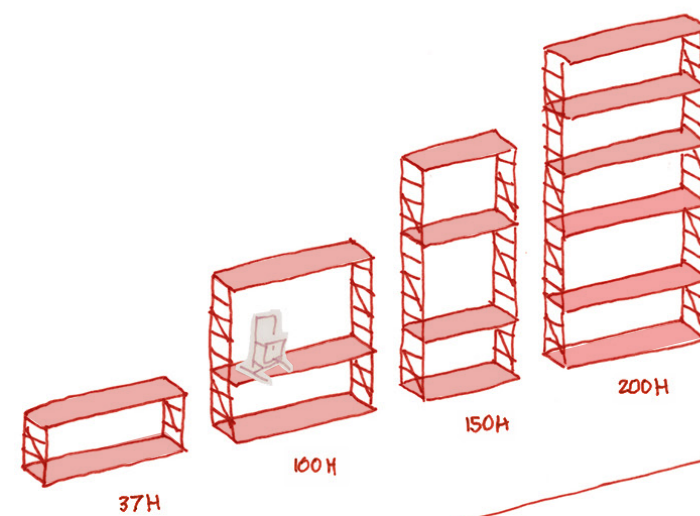
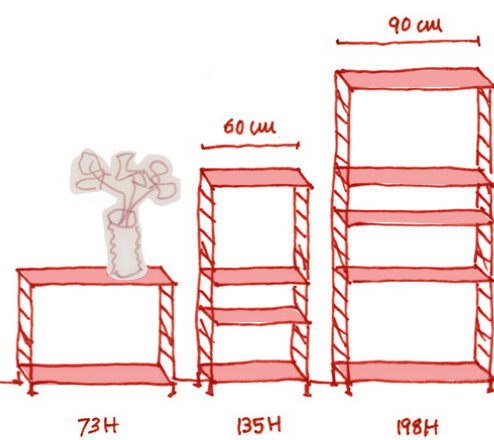
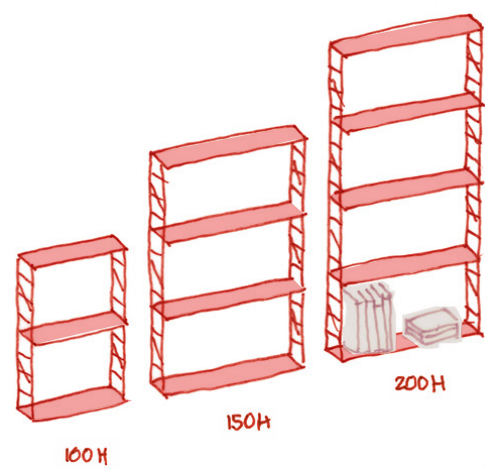


24 cm depth
Wall

24 cm depth
Floor (wall mounted)

36 cm depth
Wall

36 cm depth
Floor (wall mounted)



36 cm depth
Freestanding





14

14 Mirror back panel, linear light and clothes hanger bar.



15



16



17

- 15 Tria Floor (wall mounted) with clothes hanger bar, drawer, grid and inclined shelves.
- 16 Tria Freestanding with clothes hanger bar and inclined shelf.
- 17 Tria Wall with grid shelves, drawers and clothes hanger bar.



18

- 18 Bedside Tria Shelving System with a drawer.
- 19 Tria wall with white display cabinet and linear light accessory.



19



20

20 Detail of the retractable door with brake of Tria Shelving System cabinet.

The simple and lightweight forms of this modular shelving unit suit all needs and different spaces, whether in residential areas or professional environments. It can be used in bathrooms, libraries, dressing rooms, home offices, children's rooms, kitchens, living rooms, professional offices, retail spaces, among others. The variety of finishes offers the possibility to personalize compositions by combining materials, colors, and accessories to meet various functional and decorative needs.



One of its main features, linked to its timeless design, is its durability and quality, allowing it to adapt to new needs or functions. Since 1978, the system has evolved by incorporating new elements in order to adapt Tria to the changing demands of daily life. The latest innovation has been the introduction of the self-supporting version with bar crosses, without altering its essence or aesthetics. This uniqueness makes it a shelving unit for a lifetime, a product transferable from generation to generation.

21 Tria Shelving System Freestanding in white and oak shelves.



21



22



- 22 Tria Shelving System with display cabinet and linear light.
Catalana 1942 designed by Germán Rodríguez Arias.
MMS 1963 side table by Miguel Milá.









23 Floor Tria with desk.



23



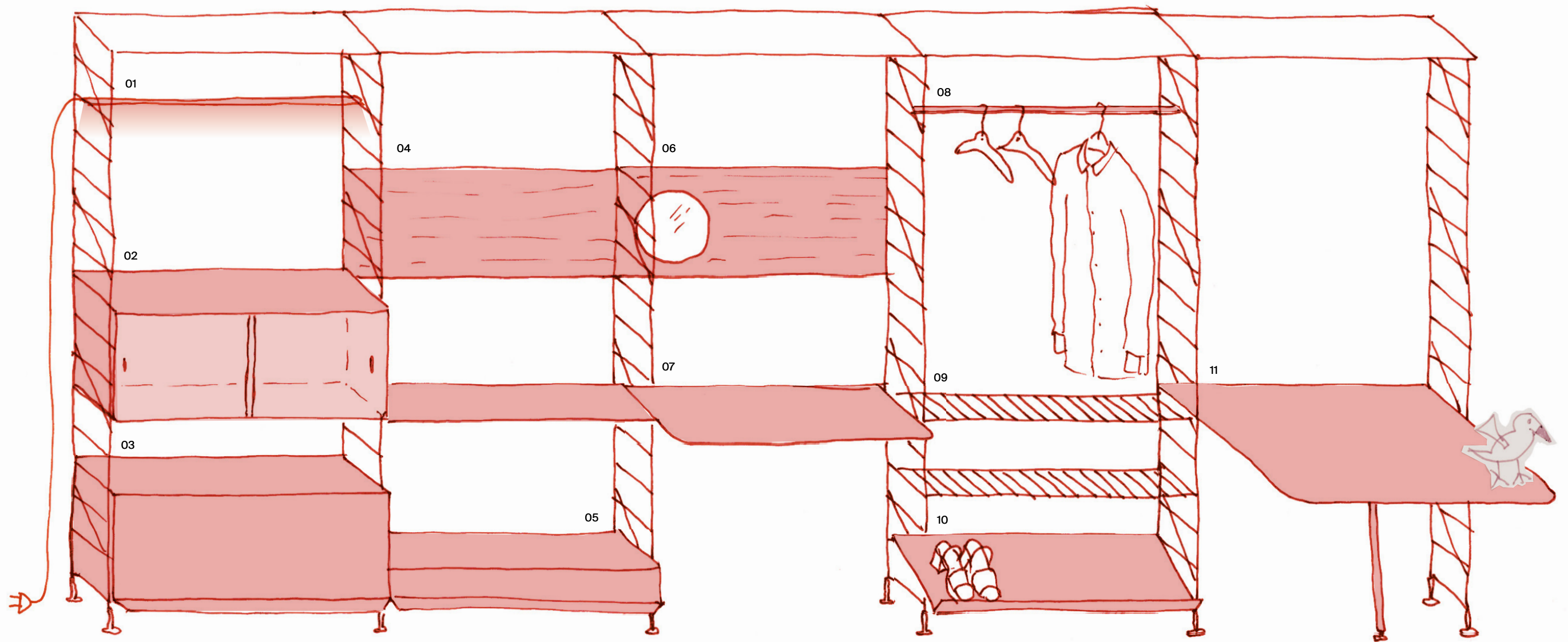
24



24 Home office Tria Shelving System.
Torres Clavé 1934 armchair by
Josep Torres Clavé.

25 Tria Shelving System with back
panels and table.





01 Linear light
02 Display cabinet
03 Cabinet

04 Back panel
05 Drawer

06 Mirror back panel
07 Desk

08 Clothes hanger bar
09 Grid shelf
10 Inclined shelf

11 Table

JM Massana & JM Tremoleda

Tria Pack Wall



JM Massana & JM Tremoleda

Tria Pack Floor (wall mounted)



JM Massana & JM Tremoleda

Tria Pack Freestanding



JM Massana & JM Tremoleda

Tria Shelf



Germán Rodríguez Arias

Catalana 1942



29 Its curious six-legged design is inspired by the typically Mediterranean chairs.

26



JM Massana & JM Tremoleda

Danesa





Its design shows that function determines form.
This chair has a backrest consisting of two different parts:
a cushion that includes magnets for the height to be adjusted
and the backrest itself.

Josep Torres Clavé

Torres Clavé 1934





Josep Maria Jujol

Jujol 1920



Miguel Milá

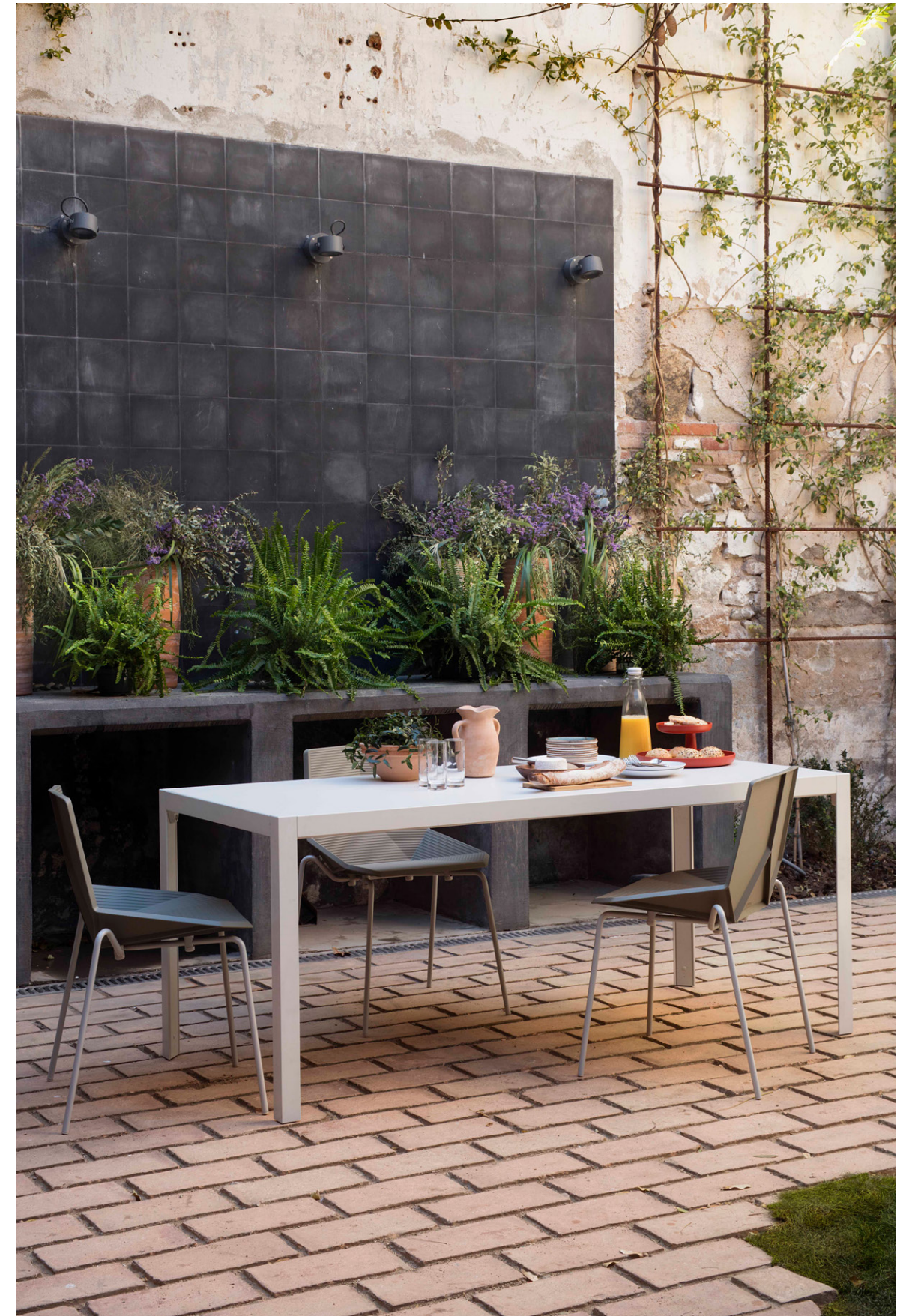
MMS 1963



JM Massana & JM Tremoleda

Pey Table System

Crafted from durable materials, it seamlessly transitions between indoor and outdoor settings, offering versatility for any environment.









Carles Riart & Montse Padrós

Ona

Ona, meaning 'wave' in Catalan, reflects its fluid design, adding elegance to any space.



Miguel Milá

Tombal



André Ricard

Copenhaguen 1966



André Ricard

Tong 1964



Álvaro Siza

Fil 1991



Bringing comfort to homes and collective spaces since 1973

Furniture and objects for homes

Mobles114

Furniture for workspaces,
public spaces and retail

Mobles114

At Mobles 114, we aim to contribute to improve living spaces to make them more comfortable and welcoming, more beautiful and more livable, whether they are spaces for homes or communities.

Our two catalogs, **Home** and **Contract**, contribute in the same way to sustainability with durable furniture that ages well and can be passed down to future generations.

Photography

- Meritxell Arjalaguer
- Lluís Casals
- Estudi Es Pujol de S'Era
- François Kollar
- Salva López
- Ariel Ramírez
- Jordi Sarrà
- Díaz Wichmann
- Pablo Santos
- Jara Varela

Illustrations

- Marta Solserra

Mobles114