

GIMLET

by Jorge Pensi

Technical specifications (1/3)

m114

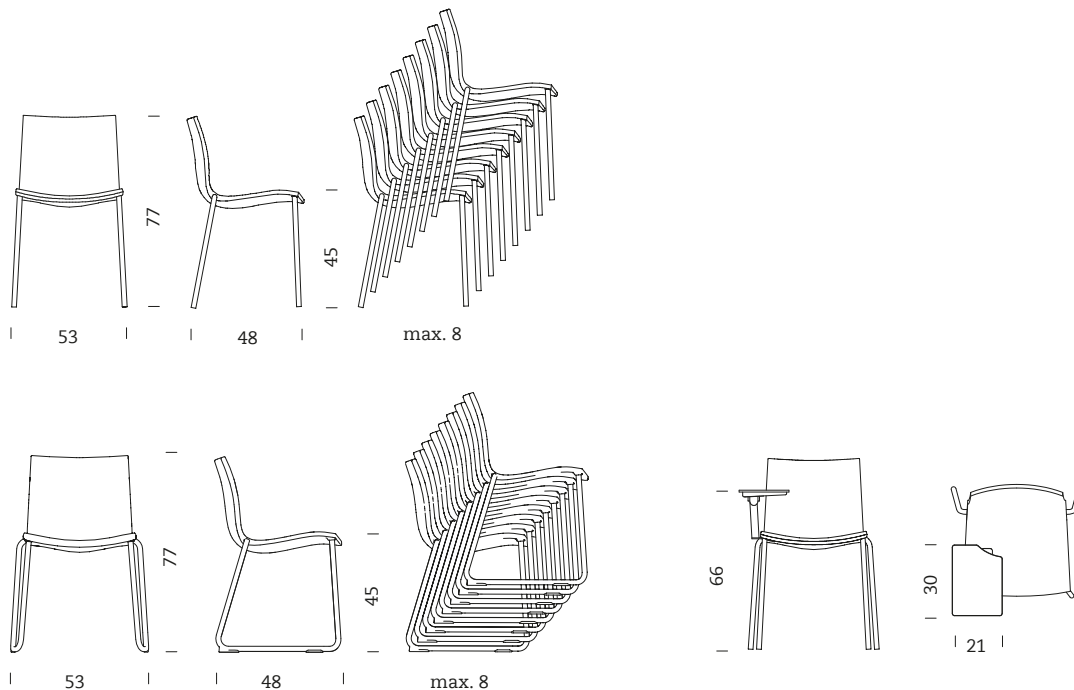
Mobles 114
Pau Claris 99 / esc 2 1r 2a
08009 Barcelona
Tel. 34 / 932 600 114
mobles114@mobles114.com
www.mobles114.com



GENERAL DESCRIPTION

Product with a polyurethane body suitable for catering projects, group facilities and the home.

DIMENSIONS



MODELS

- Gimlet
- Gimlet with sledge
- Gimlet with writing table
- Swivel Gimlet (technical specifications not enclosed)

GIMLET

by Jorge Pensi

Technical specifications (2/3)

m114

Mobles 114

Pau Claris 99 / esc 2 1r 2a

08009 Barcelona

Tel. 34 / 932 600 114

mobles114@mobles114.com

www.mobles114.com

MATERIALS AND FINISHES

Frame

The frame for the models with feet and sledge is made up of ST-37 cold-rolled steel tubing, with diameter 20x2 mm, finished with fusion bonded epoxy coating RAL 7038, 80 microns, 30% matt.

The four supports on the ground are protected by plastic ferrules.

Seat

Seat-backrest and arm made from solid polyurethane PUR foam (hardness 70-75 Sh A), dark grey RAL 7021, grey beige RAL 7006, olive green RAL 6003, or red brown RAL 8012.

Polyurethane foam is a sound-absorbing material that contributes to the acoustic improvement of the spaces where the chair is placed.

The seat's inner frame, of ST-37 steel, comprises rails with a 20x6 mm section and different metal pieces welded together.

ACCESSORIES

Swivel writing table, on the left or right

Writing table made from compact layered HPL in white with a black core 8 mm thick.

The frame is made up of a series of metal pieces welded together and also painted in RAL 7038. The piece that allows the table to swivel is a standard PP piece with an anti-panic mechanism to allow users to get out of the chair easily.

Chair transport platform.

Steel platform to transport 8 stackable chairs, GIMLET model.

General dimensions: 540x540x140 mm (including wheels).

Structure made from 4 steel plates, L section 45x2 mm in diameter. Internally tooled with M10 thread to position the wheels.

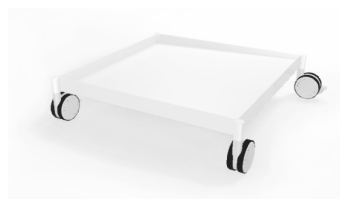
Standard wheels, 50 mm diameter. Maximum load: 48 kg per wheel.

The platform's base is made from HPL (High Pressure Laminate) using wood subproducts (cellulose) and thermosetting resin, 8 mm thick, hardwearing, durable and uniform.

Standard finish in white RAL 9002.,

PP clamp between chairs.

Felt studs.



GIMLET

by Jorge Pensi

Technical specifications (3/3)

m114

Mobles 114

Pau Claris 99 / esc 2 1r 2a

08009 Barcelona

Tel. 34 / 932 600 114

mobles114@mobles114.com

www.mobles114.com

PACKAGING, WEIGHT AND VOLUME

Chair (1 unit)

Weight: 8 kg

Dimensions: 62x57x84 cm

Volume: 0.03 m³

Chair with sledge (1 unit)

Weight: 9 kg

Dimensions: 62x57x84 cm

Volume: 0.03 m³

CERTIFICATES AND REGULATIONS

Chair

UNE EN 13761:03 - public use

UNE EN 1021 part 1 and 2 self-extinguishing

Chair with sledge

UNE EN 1728:01 and UNE EN 15373:07 on resistance and durability - Level 3 severe public use

UNE EN 1021 part 1 and 2 self-extinguishing

Polyurethane

Directive 95/28/EC relating to the burning behaviour of materials

Standard UTAC 18-502/1 - 1985 type A.

Standard DIN 53479 on density, DIN 53504 on tensile strength, DIN 53515 on tear strength and DIN 53505 on Shore hardness, value 70 to 75 Sh A.

The mechanical specifications of the foam comply with standard DIN 53420 on density, DIN 53577 on compression stress (40%) and DIN 53572 on residual deformation (50%, 22h at 70°C).

FAMILY

